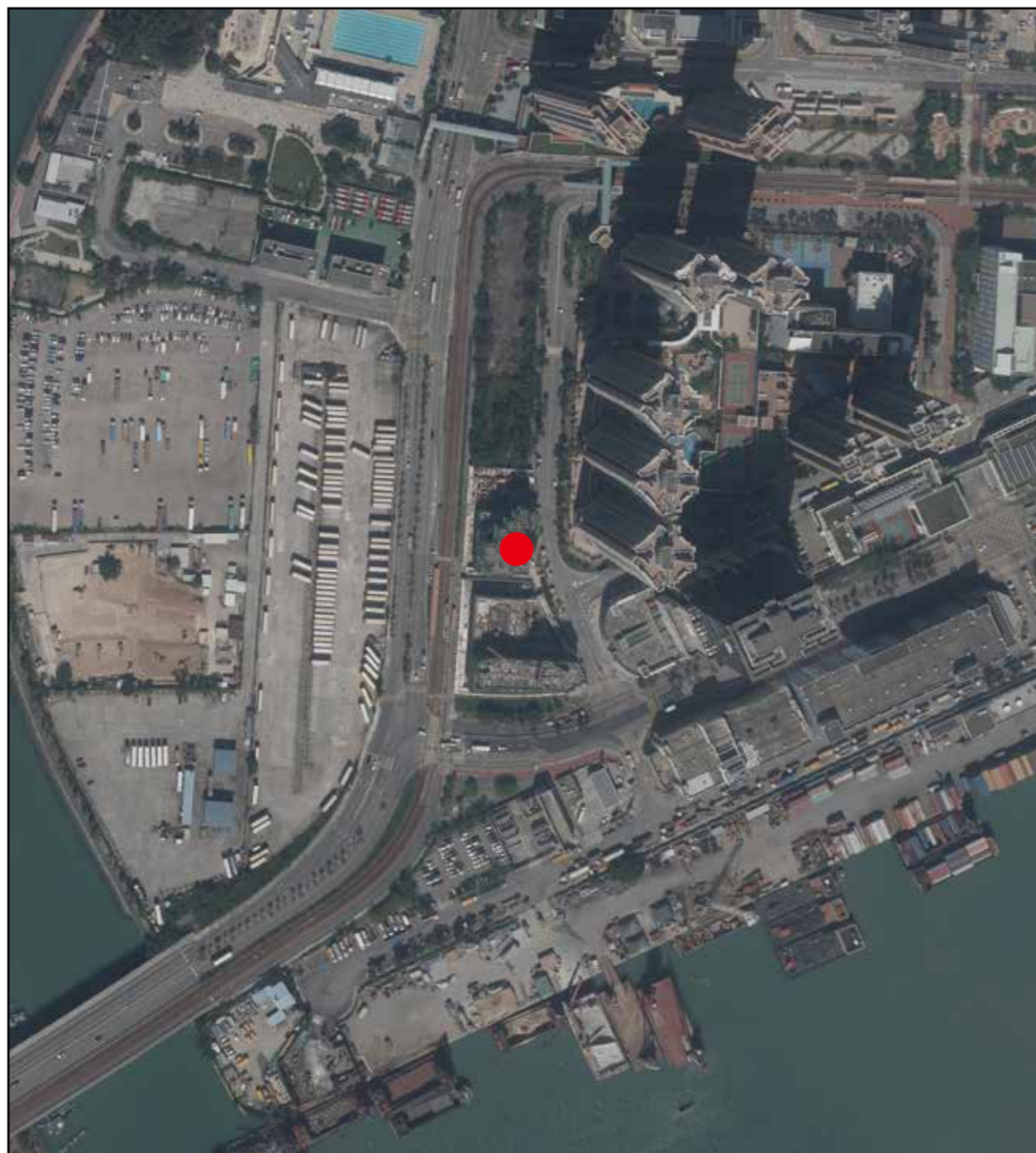


AERIAL PHOTOGRAPH OF THE PHASE 期數的鳥瞰照片

Adopted from part of the aerial photograph taken by the Survey and Mapping Office of the Lands Department at a flying height of 6,900 feet, photo No. E048084C, date of flight: 29 October 2018.

摘錄自地政總署測繪處在6,900呎的飛行高度拍攝之鳥瞰照片，照片編號為E048084C，飛行日期：2018年10月29日。



● Location of the Phase
期數的位置

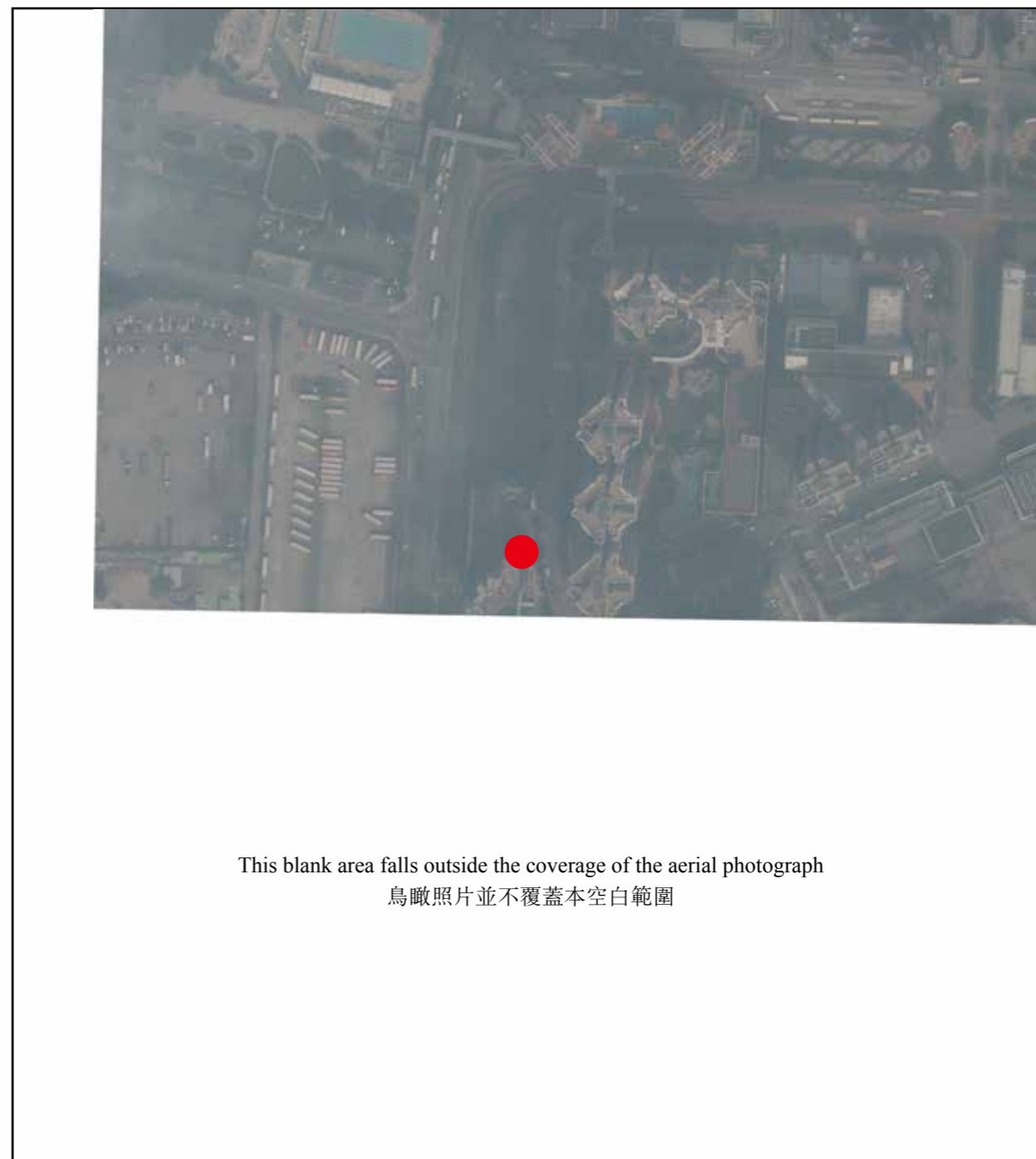
Survey and Mapping Office, Lands Department, The Government of HKSAR

© Copyright reserved – reproduction by permission only.

香港特別行政區政府地政總署測繪處版權所有，未經許可，不得複印。

Adopted from part of the aerial photograph taken by the Survey and Mapping Office of the Lands Department at a flying height of 6,900 feet, photo No. E066385C, date of flight: 27 September 2019.

摘錄自地政總署測繪處在6,900呎的飛行高度拍攝之鳥瞰照片，照片編號為E066385C，飛行日期：2019年9月27日。



This blank area falls outside the coverage of the aerial photograph
鳥瞰照片並不覆蓋本空白範圍

Notes:

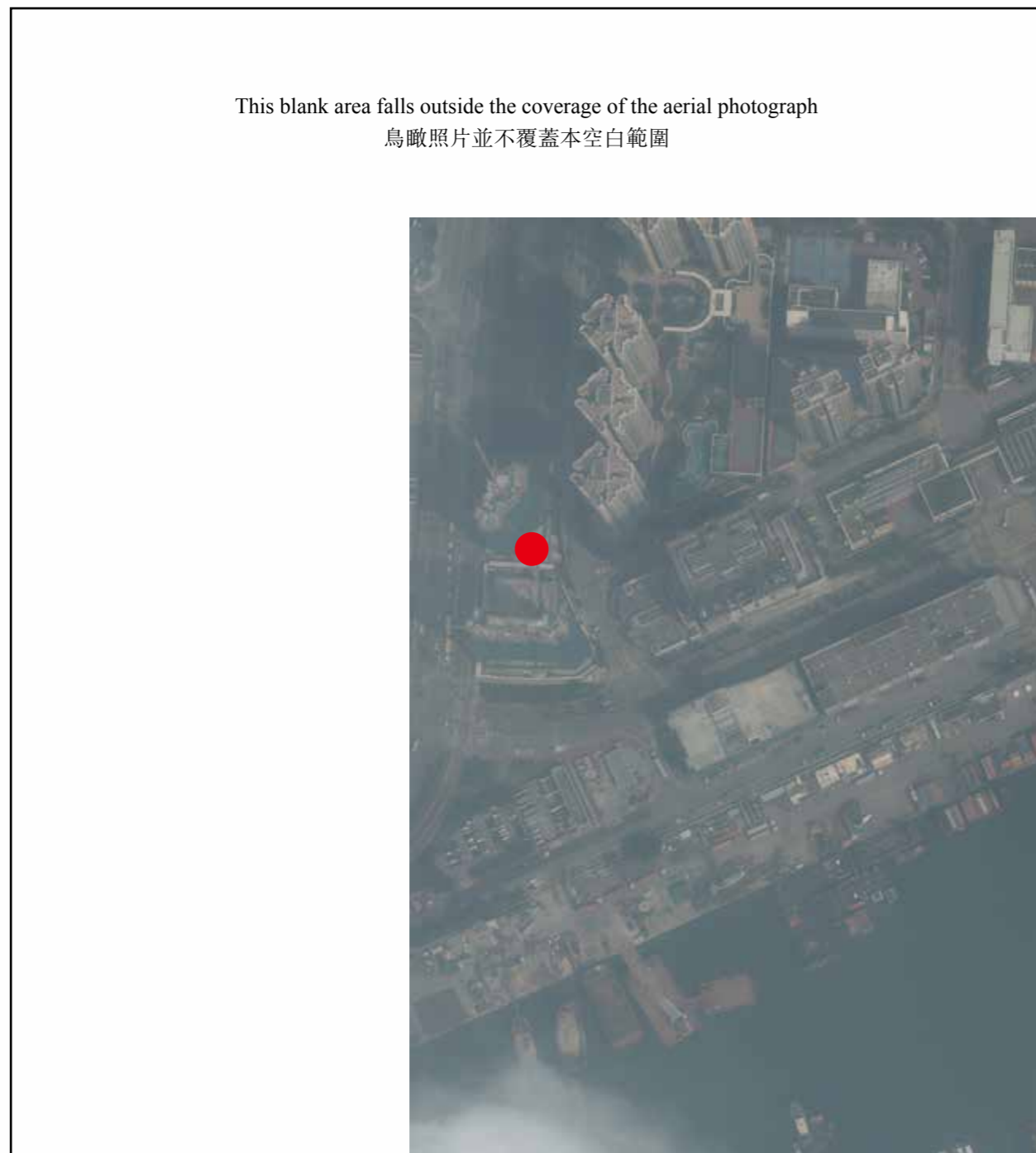
1. Copy of the aerial photographs of the Phase are available for free inspection at the sales office during opening hours.
2. The aerial photographs may show more than the area required under the Residential Properties (First-hand Sales) Ordinance due to the technical reason that the boundary of the Phase is irregular.

備註：

1. 期數的鳥瞰照片之副本可於售樓處開放時間內免費查閱。
2. 由於期數的邊界不規則的技術原因，此照片所顯示的範圍可能超過《一手住宅物業銷售條例》所規定的範圍。

Adopted from part of the aerial photograph taken by the Survey and Mapping Office of the Lands Department at a flying height of 6,900 feet, photo No. E065724C, date of flight: 27 September 2019.

摘錄自地政總署測繪處在6,900呎的飛行高度拍攝之鳥瞰照片，照片編號為E065724C，飛行日期：2019年9月27日。



● Location of the Phase
期數的位置

Survey and Mapping Office, Lands Department, The Government of HKSAR

© Copyright reserved – reproduction by permission only.

香港特別行政區政府地政總署測繪處版權所有，未經許可，不得複印。

Adopted from part of the aerial photograph taken by the Survey and Mapping Office of the Lands Department at a flying height of 6,900 feet, photo No. E065404C, date of flight: 27 September 2019.

摘錄自地政總署測繪處在6,900呎的飛行高度拍攝之鳥瞰照片，照片編號為E065404C，飛行日期：2019年9月27日。



Notes:

1. Copy of the aerial photographs of the Phase are available for free inspection at the sales office during opening hours.
2. The aerial photographs may show more than the area required under the Residential Properties (First-hand Sales) Ordinance due to the technical reason that the boundary of the Phase is irregular.

備註：

1. 期數的鳥瞰照片之副本可於售樓處開放時間內免費查閱。
2. 由於期數的邊界不規則的技術原因，此照片所顯示的範圍可能超過《一手住宅物業銷售條例》所規定的範圍。

AERIAL PHOTOGRAPH OF THE PHASE 期數的鳥瞰照片

Adopted from part of the aerial photograph taken by the Survey and Mapping Office of the Lands Department at a flying height of 6,900 feet, photo No. E055590C, date of flight: 24 January 2019.

摘錄自地政總署測繪處在6,900呎的飛行高度拍攝之鳥瞰照片，照片編號為E055590C，飛行日期：2019年1月24日。



● Location of the Phase
期數的位置

Survey and Mapping Office, Lands Department, The Government of HKSAR

© Copyright reserved – reproduction by permission only.

香港特別行政區政府地政總署測繪處版權所有，未經許可，不得複印。

Notes:

1. Copy of the aerial photographs of the Phase are available for free inspection at the sales office during opening hours.
2. The aerial photographs may show more than the area required under the Residential Properties (First-hand Sales) Ordinance due to the technical reason that the boundary of the Phase is irregular.

備註：

1. 期數的鳥瞰照片之副本可於售樓處開放時間內免費查閱。
2. 由於期數的邊界不規則的技術原因，此照片所顯示的範圍可能超過《一手住宅物業銷售條例》所規定的範圍。